

# Port of Seattle Regional Transportation Investments

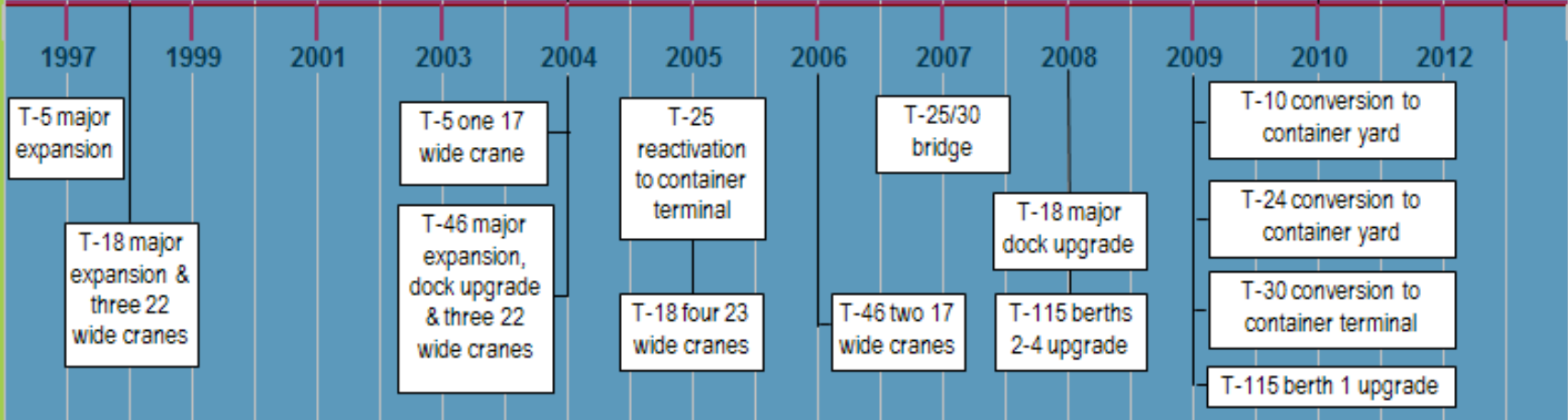
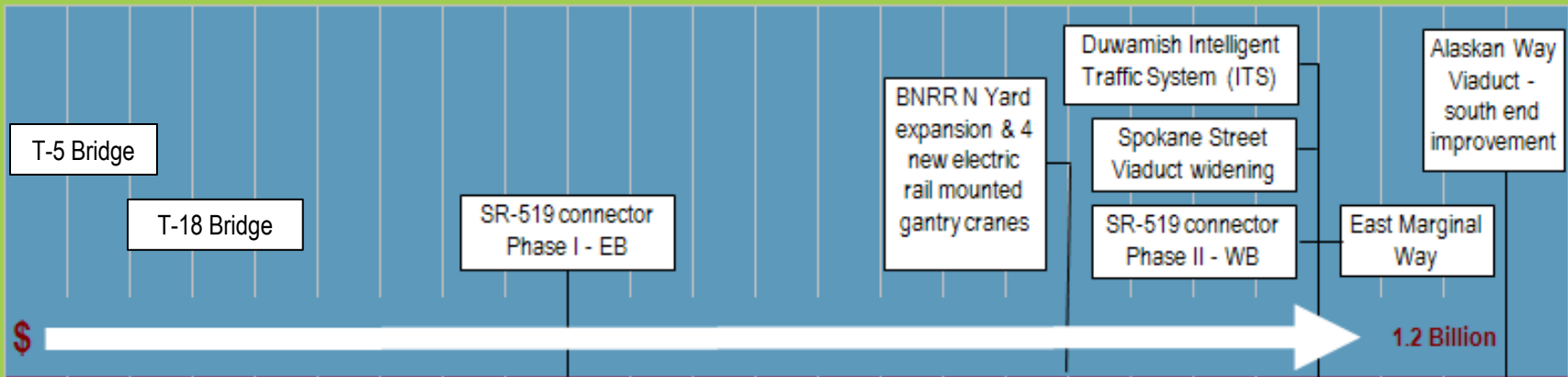
March 13, 2012





# Seaport Project Investment Timeline

## Roads & Rail

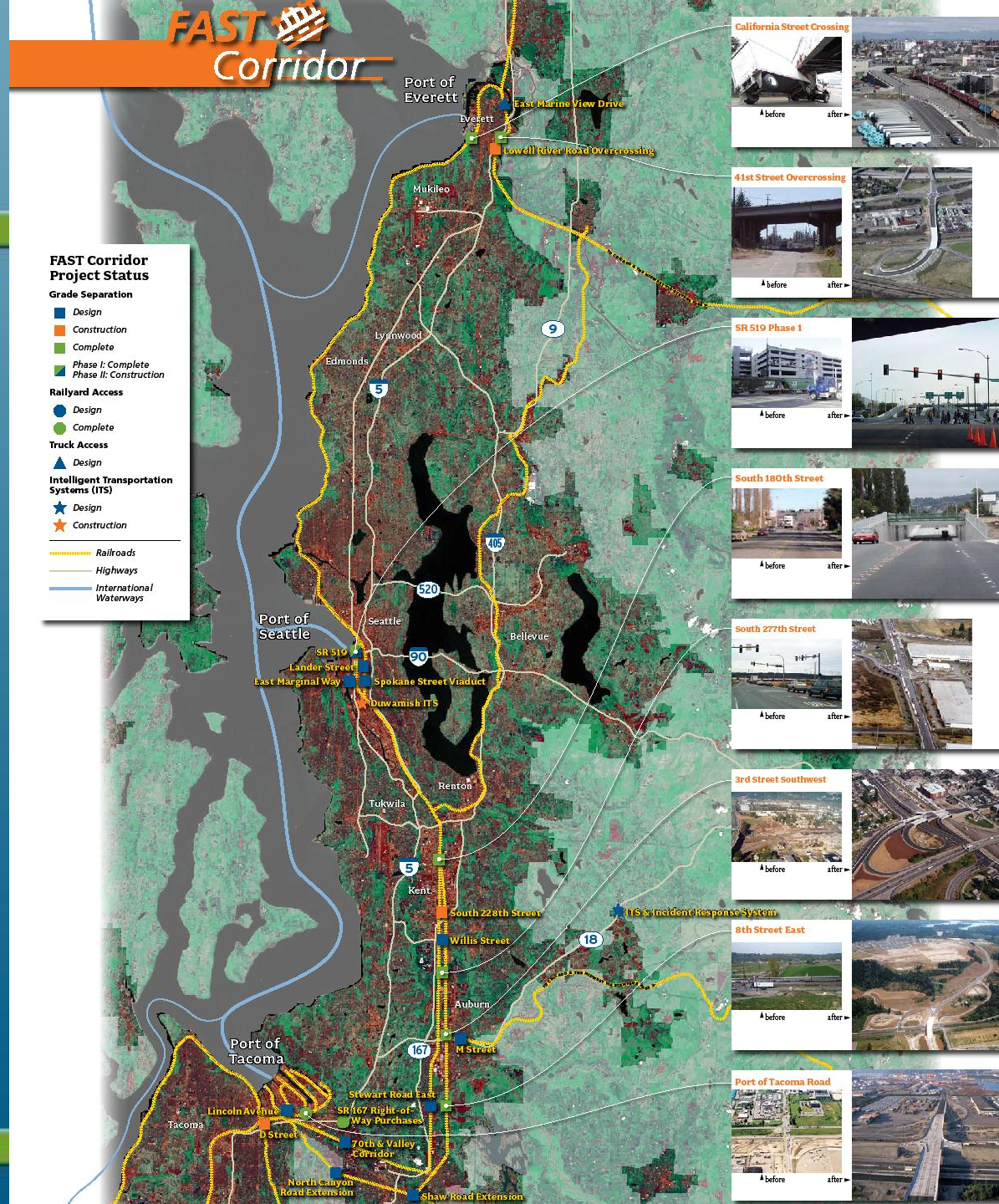


## Terminals

# Working with partners

## Port contribution to FAST projects:

- Continues Port commitment to FAST Corridor Partners
- Fills final funding gaps



# POS FAST Corridor Investment

(\$ in thousands)

| Lead Agency | Project                                   | Year CN | POS Investment   | Total Project Investment |
|-------------|---|---------|------------------|--------------------------|
| Auburn      | 3rd St. SW Grade Separation               | 1999    | \$ 1,250         | \$ 31,500                |
| Tukwila     | S. 180 <sup>th</sup> St. Grade Separation | 1999    | 250              | 23,300                   |
| WSDOT       | SR-519 P 1: Atlantic Overpass             | 2003    | 7,050            | 109,300                  |
| WSDOT       | SR-519 P 2: Royal Brougham                | 2009    | 5,500            | 74,400                   |
| POS         | East Marginal Way Grade Separation        | 2009    | 18,800           | 52,731                   |
| Seattle     | Duwamish ITS                              | 2009    | 500              | 9,100                    |
| Kent        | S. 228 <sup>th</sup> St. Grade Separation | 2009    | 1,200            | 46,100                   |
| Seattle     | Spokane St. Viaduct                       | 2009    | 5,000            | 168,500                  |
| Auburn      | M Street Grade Separation                 | 2012    | 771              | 22,785                   |
|             | <b>TOTAL FAST</b>                         |         | <b>\$ 40,321</b> | <b>\$ 537,716</b>        |

# Alaskan Way Viaduct Replacement Program

## Key components with Port benefit



### Key Project Components

- South End Holgate to King
- Surface Alaskan Way to Elliott/Western Connector
- Bored Tunnel, South Access, North Access (Portals)

### Construction impact mitigation

#### Risk mitigation

- Seawall replacement
- Viaduct risk mitigation

### Complementary system upgrades

- Spokane Street Corridor
- East Marginal Way
- SR519
- Duwamish ITS
- Mercer Corridor
- Transit



# POS Regional Transportation Investments

(\$ in millions)

| Lead Agency                      | Project                                 | Year of CN   | POS Share      | Total Project     |
|----------------------------------|---|--------------|----------------|-------------------|
| FAST Partners                    | FAST Corridor (to date)                 | 1999-present | \$ 40.3        | \$ 537.7          |
| SeaTac                           | 28th/26th                               | 2000         | 2.8            | 26.0              |
| Seattle                          | Galer Street Overpass                   | 2001         | 1.6            | 20.0              |
| WSDOT                            | SR518: 3rd Lane Eastbound               | 2008         | 10.0           | 35.0              |
| King Co                          | South Park Bridge                       | 2011         | 5.0            | 162.3             |
| Port                             | Argo Yard Truck Access                  | 2013         | 2.2            | 7.8               |
| <b>Sub-total without Viaduct</b> |   |              | <b>\$61.9</b>  | <b>\$ 788.8</b>   |
| WSDOT                            | Alaskan Way Viaduct Replacement Project | 2016-2018    | \$ 300.0       | \$ 4,200.0        |
|                                  |   |              | <b>\$361.9</b> | <b>\$ 4,988.8</b> |